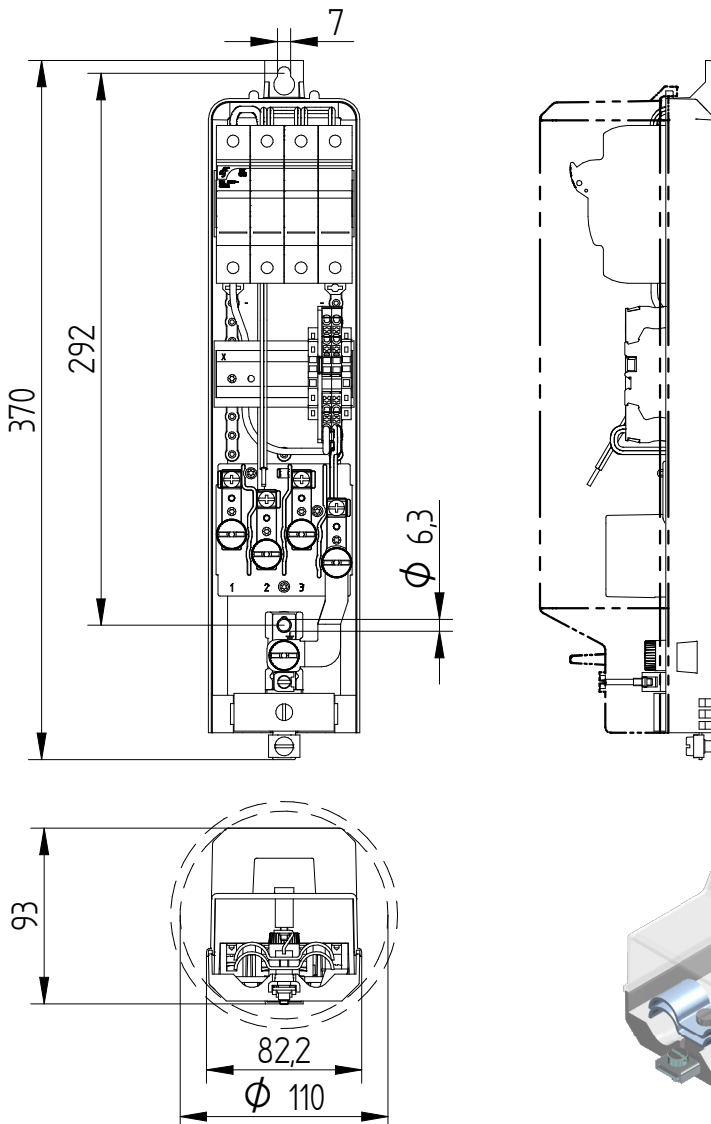


LS-110

5L7001



Specifications

Brand	: ELEQ
Type	: LS-110
Article number	: 5L7001

Technical specifications

Minimum inside diameter	: 110 mm
Looping through	: Yes
Including	: DC fuse holder 3P+N (10x38mm)
Fuse included	: Yes, 3x 4A DC
Number of terminals	: 5 Pcs; 1x +350Vdc, 1x common, 1x 350Vdc, 2x earth
Max. connection per terminal	: 2x 16mm ²
Strain relief	: Yes, max. 2 power cables 23mm and 2 armature cables
Earth litze	: No

Details

Measurement options
DC connection box +350Vdc|common|-350Vdc
Output selectable between +350Vdc and -350Vdc

Packing

12 Pcs in a box or 216 Pcs per pallet

Use

Connection box suitable for installation in lampposts, parking meters, camera systems, billboards, etc. connected to a DC network.

